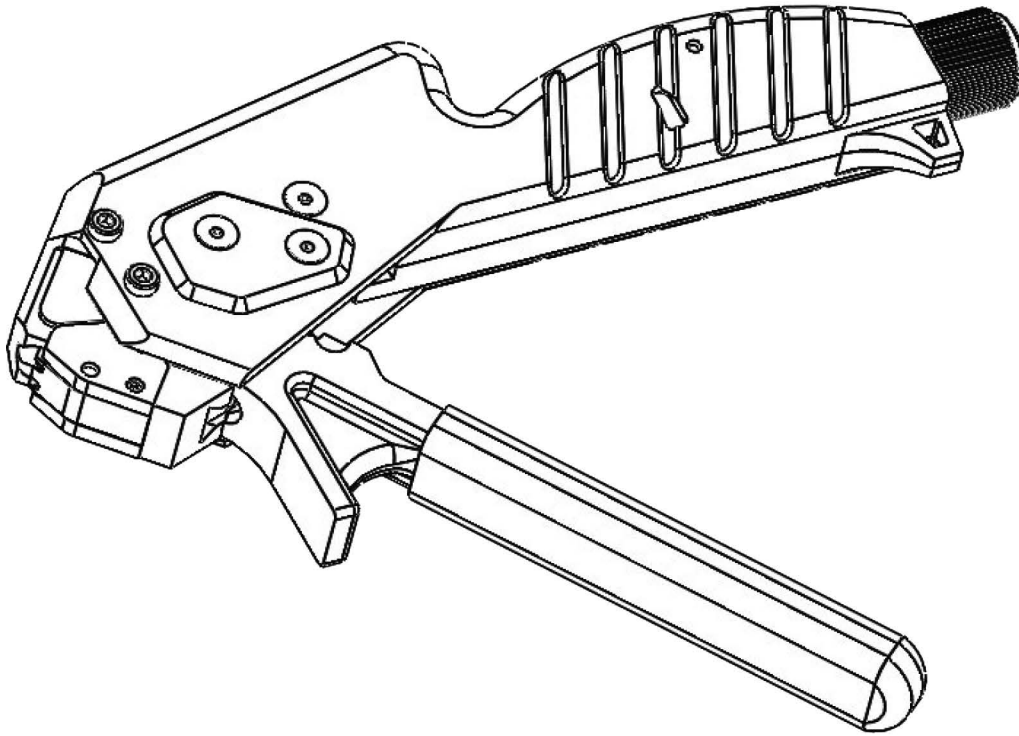


STRAPBINDER



**POW'R-WRAP™ TOOL**

**HBPW8201**

**MANUFACTURER PART NUMBER RSA-590**

*Contents*

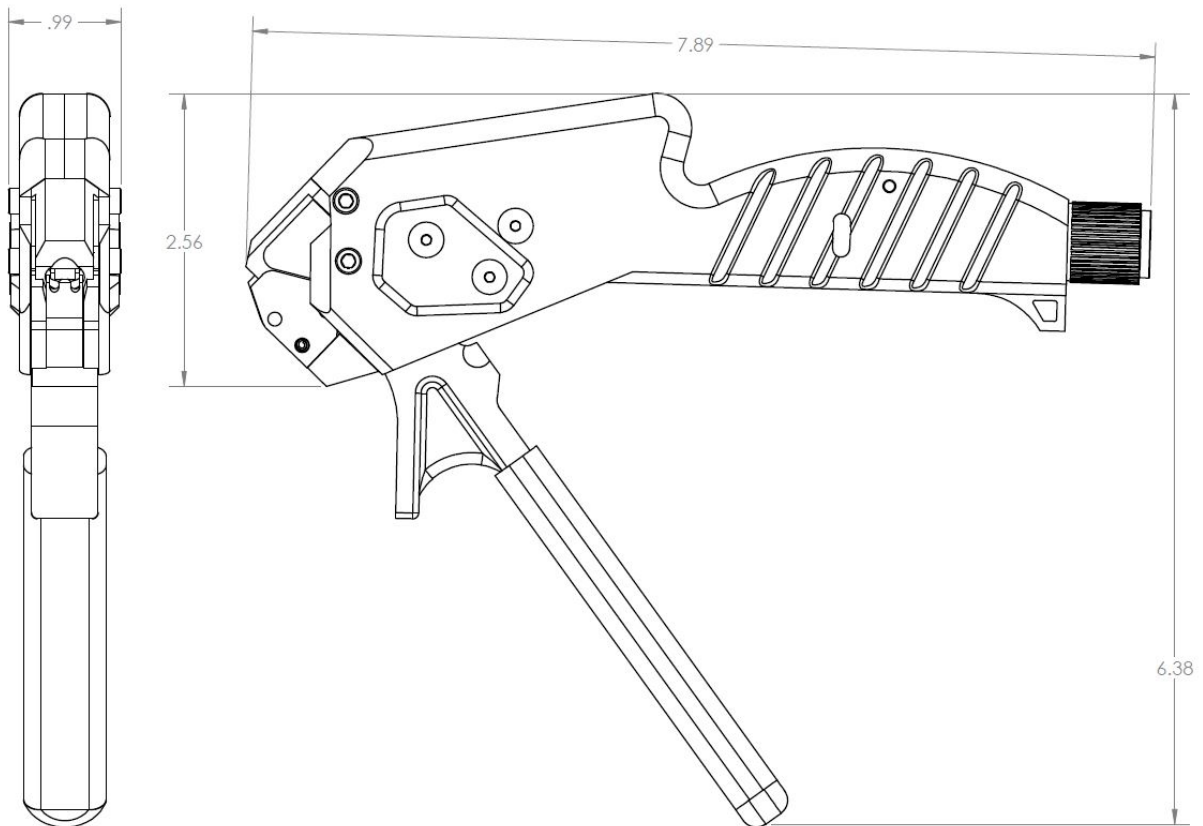
- 2 Technical Data
- 3 Safety Instructions
- 5 Operation Instructions
- 6 Adjustment & Maintenance
- 7 Schematic & Parts List

# TECHNICAL DATA

Length 7.89"  
Width 0.99"  
Height 6.38"  
Weight 1.17 lbs

## Strapping Dimensions

Width 1/4"  
Thickness .015"  
Material Smooth stainless-steel



# **SAFETY INSTRUCTIONS**

Read and follow operation instructions carefully.

Failure to follow these warning can result in severe personal injury.

## **EYE INJURY HAZARD**

When handling RSA-590 and stainless-steel strap, always wear protective glasses.

Failure to wear safety glasses with side shields can result in severe eye injury or blindness.

Always wear safety glasses with side shields that conform to ANSI Standard Z87.11

## **PROTECTIVE GLOVES**

When handling RSA-590 and stainless-steel strap, always wear protective gloves.

## **STRAP WARNINGS**

Never use strap as a means of pulling or lifting loads.

Follow operation instructions (pg. 5) to properly apply using the RSA-590.

## **STRAP BREAKAGE HAZARD**

Sudden loss of strap tension or strap breakage can occur due to improper operation of the RSA-590, excessive tensioning, using non-recommended strapping or sharp corners on a load.

This can further lead to a sudden loss of balance causing one to fall or the tool and strap flying violently.

Preventatives:

- Use edge protectors if load corners are sharp
- Use recommended strap quality, width, gauge, and tensile strength (page 2)
- Place strap correctly around a properly positioned load
- Load strap correctly into the RSA-590 tool
- When tensioning, position yourself to one side of the strap and keep all bystanders away

## **CUTTING TENSIONED STRAP**

When cutting strapping, use the proper strapping cutter and keep other bystanders and yourself at a safe distance from the strap. Always stand to side of strap, away from the direction in which the loosened strap will release.

## **TOOL HAZARD**

A well maintained and inspected tool can optimize safety!

Check tool daily for broken or worn parts.

DO NOT MODIFY any part of the tool without proper expertise and supervision. Unsupervised modification can result in severe personal injury.

## **FALL HAZARD**

Keep work area tidy. A cluttered or messy work area may cause a risk of injury.

Maintain proper footing and/or balance – especially in elevated areas – when operating the RSA-590.

Failure to do so may result in falling and severe personal injury.

Both feet should be securely placed on a flat, solid, surface. Do not use the RSA-590 when you are in an awkward position. In addition, follow the rules and regulation established in the workplace to prevent accidents.

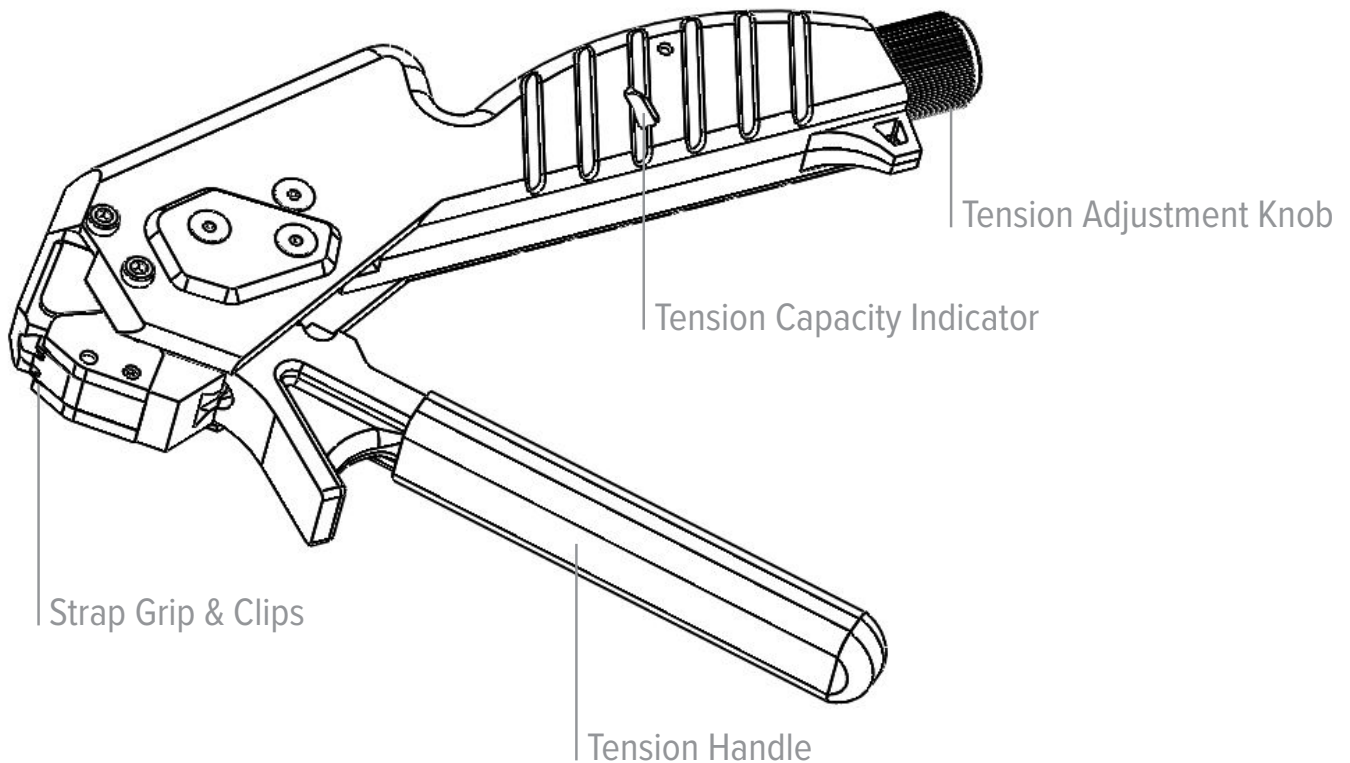
# OPERATION INSTRUCTIONS

*RSA-590 works with ¼ smooth stainless steel strapping.*

1. Preset desired tension (0-8) by turning the knob at the rear of the tool – the higher the number, the tighter the tension capacity.

0 = 15 lbs	1 = 20 lbs	2 = 30 lbs	3 = 40 lbs	
4 = 50 lbs	5 = 60 lbs	6 = 70 lbs	7 = 75 lbs	8 = 80 lbs

2. Push tension handle forward to open strap grip.
3. Slide the end of the strap through the opening and push the tool forward on the strap until the clips are holding the seal.
4. Squeeze the tension handle several times, until the tool locks.  
Once locked, squeeze the handle one more time to seal and cut the strap.  
Result: deep punch and dual lock on the outside
5. When complete, remove remaining strapping from tool by working handle back and forth.

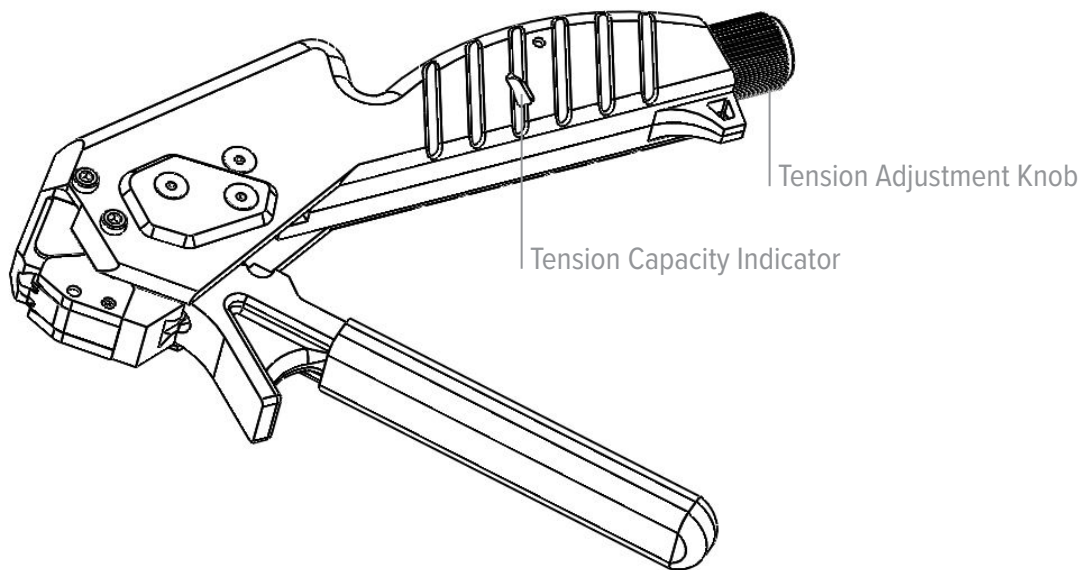


# ADJUSTMENTS & MAINTENANCE

## TENSION ADJUSTMENT

Preset desired tension (0-8) by turning the knob at the rear of the tool – the higher the number, the tighter the tension capacity.

0 = 15 lbs    1 = 20 lbs    2 = 30 lbs    3 = 40 lbs  
4 = 50 lbs    5 = 60 lbs    6 = 70 lbs    7 = 75 lbs    8 = 80 lbs

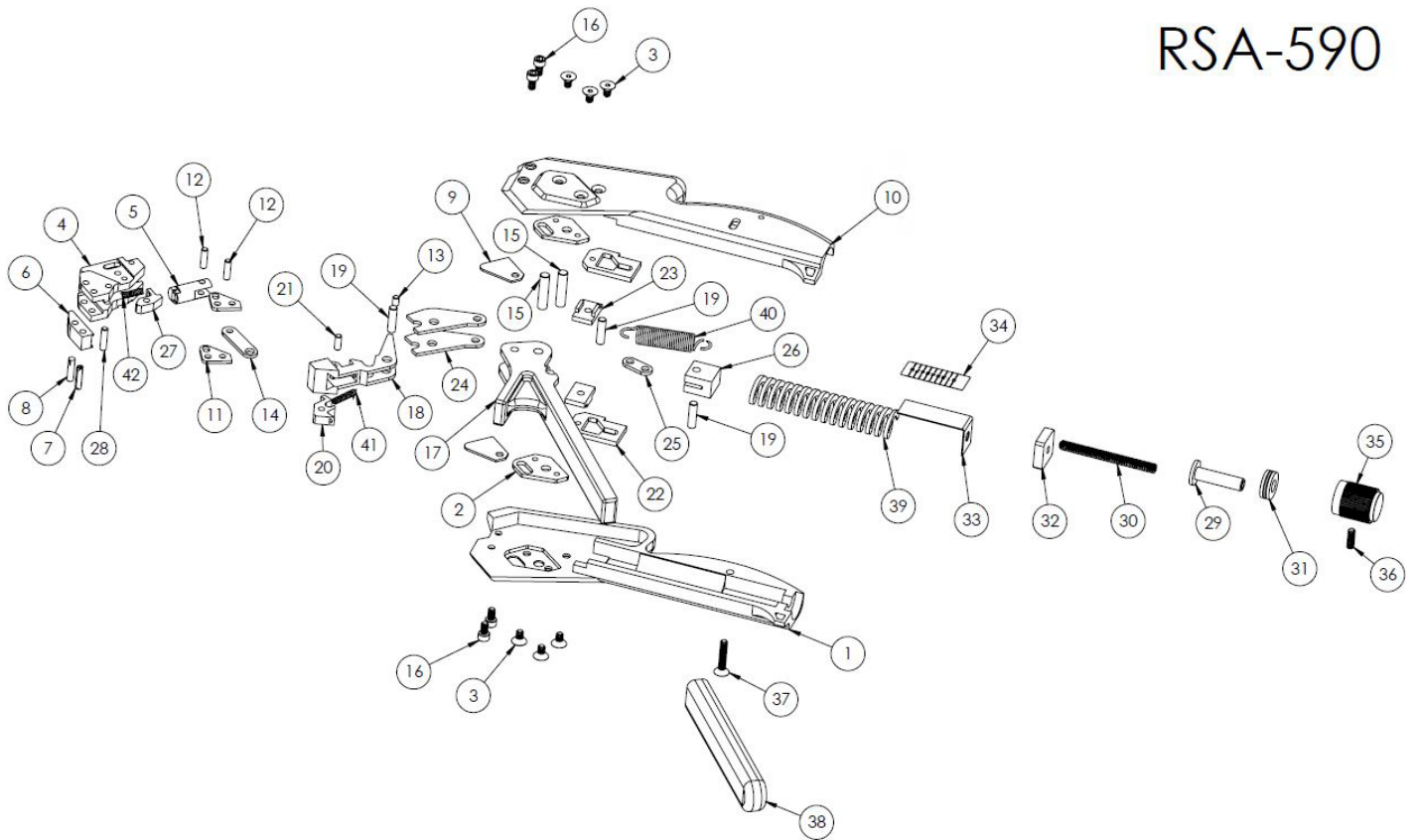


## DAILY INSPECTION

Keep a daily tool inspection log for damaged or worn parts.

# SCHEMATIC & PARTS LIST

## RSA-590



ITEM NO.	PART NUMBER	DESCRIPTION	QTY.
1	R590-26	RIGHT BODY	1
2	R590-13	BODY PLATE	2
3	R590-27	FLAT HEAD SCREW #6-32 X .25"	6
4	R590-37	TOOL HEAD	1
5	R590-34	KNIFE ULTRA-LOK	1
6	R590-38	BLADE ULTRA-LOK	1
7	R590-42	SPIRAL PIN 1/8" X 1/2"	1
8	R590-36	GROOVED DOWEL PIN	1
9	R590-35	HEAD COVER	2
10	R590-12	LEFT BODY	1
11	R590-31	CUROFF LEVER	2
12	R590-33	DOWEL PIN 1/8" X 7/16"	2
13	R590-32	DOWEL PIN 1/8" X 3/16"	1
14	R590-30	CUTOFF LINK	1
15	R590-16	DOWEL PIN 3/16" X .780"	2
16	R590-28	CAP SCREW #6-32 X .25"	4
17	R590-21	HANDLE	1
18	R590-15	PULL UP LEVER - FRONT LOAD	1
19	R590-14	DOWEL PIN 5/32" X 9/16"	3
20	R590-17	GRIPPER PULL	1
21	R590-18	PIN 1/8" X .313"	1
22	R590-11	TENSION PLATE	2
23	R590-29	CENTERING PAD	2
24	R590-10	TENSION ARM	2

ITEM NO.	PART NUMBER	DESCRIPTION	QTY.
25	R590-09	TENSION LINK	1
26	R590-20	TENSION PLUNGER	1
27	R590-41	GRIPPER HOLD	1
28	R590-40	DOWEL PIN 1/8" X 1/2"	1
29	R590-03	TENSION CAP	1
30	R590-23	SET SCREW #10-24 X 2.0"	1
31	R590-02	THRUST BEARING	1
32	R590-04	TENSION BLOCK	1
33	R590-05	TENSION INDICATOR	1
34	R590-06	TENSION INDICATOR DECAL	1
35	R590-01	ADJUSTMENT KNOB	1
36	R590-24	SET SCREW #6-32 X 7/16"	1
37	R590-25	FLAT HEAD SCREW #6-32 X .75"	1
38	R590-22	HANDLE GRIP	1
39	R590-07	SPRING - DIE	1
40	R590-08	SPRING - EXTENSION	1
41	R590-19	SPRING 1/8" X 5/8" 25#	1
42	R590-39	SPRING 1/8" X 1/2" 13#	1